



## Apartment Features\*

- Newly Renovated
- All Electric Appliances
- Modern Lighting
- Ceiling Fans\*
- Patios and Balconies\*
- Pass-Thru Bars\*
- Large Closets
- Central Heat & Air
- Energy Efficient Solar Screens
- Spacious Floorplans
- Cable Ready
- Pet Friendly\*
- Professional On-Site Management
- 24 Hour Maintenance

## Community Amenities

- Tropical Pool with Sun Deck
- Beautifully Landscaped Courtyard
- BBQ Area
- Family Friendly Playground
- Clubhouse with Billiards
- Easy Freeway Access
- Conveniently Located Near Shopping, Dining and Schools
- Laundry Facilities
- Roadside Assistance Program

\*Some features available in select homes.  
Available features subject to change.

**Woodland Park** is conveniently located close to shopping, dining and many employment centers in the heart of Arlington, Texas. Our community offers features and amenities such as an awesome, sparkling swimming pool surrounded by many trees and a relaxing arbor. We have picnic areas, BBQ Grills and plenty of grassy areas. Our new playground area is perfect for the little ones to enjoy.

We're confident you are going to love your new apartment home at Woodland Park!

Find us on  **facebook**  
[Facebook.com/woodland.park.apts](https://www.facebook.com/woodland.park.apts)

Professionally Managed by



# Woodland Park apartments



4046 Woodland Park  
Arlington, Texas 76013

(817) 469-9191  
FAX: (817) 274-1801

[LiveAtWoodlandPark.com](http://LiveAtWoodlandPark.com)



**RENT** \_\_\_\_\_  
**DEPOSIT** \_\_\_\_\_  
 1 Bdrm / 1 Bath  
 705 Sq. Ft.\*



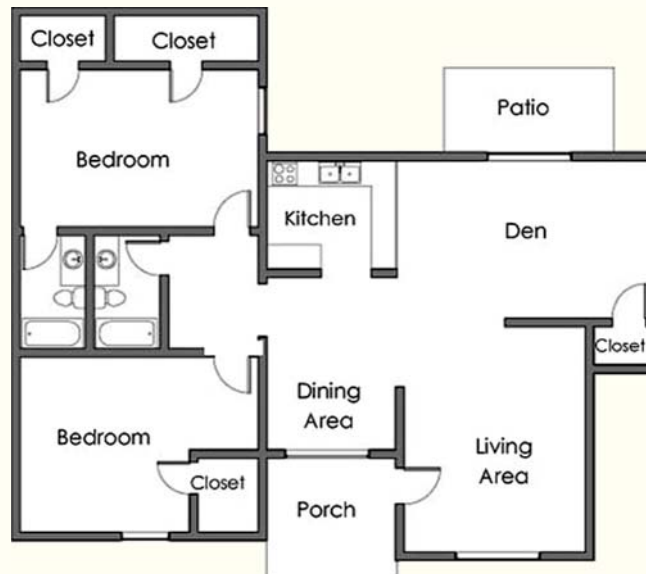
**RENT** \_\_\_\_\_  
**DEPOSIT** \_\_\_\_\_  
 2 Bdrm / 1 Bath  
 995 Sq. Ft.\*



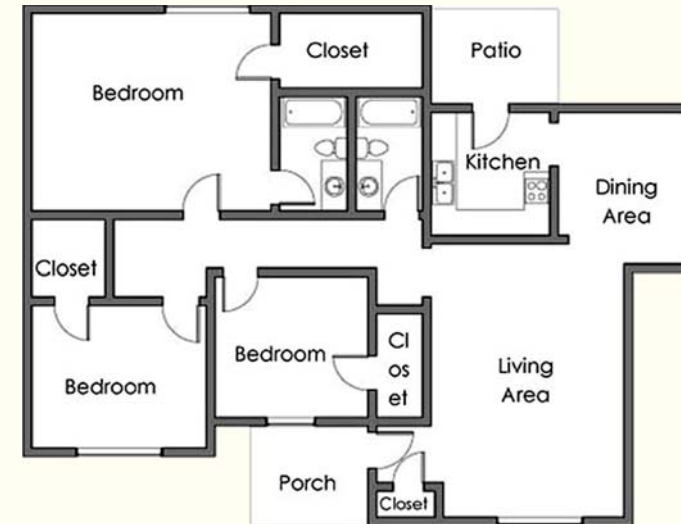
**Townhome**  
**RENT** \_\_\_\_\_  
**DEPOSIT** \_\_\_\_\_  
 2 Bdrm / 1.5 Bath  
 1,170 Sq. Ft.\*



**RENT** \_\_\_\_\_  
**DEPOSIT** \_\_\_\_\_  
 2 Bdrm / 2 Bath  
 1,140 Sq. Ft.\*



**RENT** \_\_\_\_\_  
**DEPOSIT** \_\_\_\_\_  
 2 Bdrm / 2 Bath  
 with Den 1,225 Sq. Ft.\*



**RENT** \_\_\_\_\_  
**DEPOSIT** \_\_\_\_\_  
 3 Bdrm / 2 Bath  
 1,320 Sq. Ft.\*

\*Square footage is approximate Actual floorplans may vary